

Nursery Rhyme Trail

at Beaumanor Hall

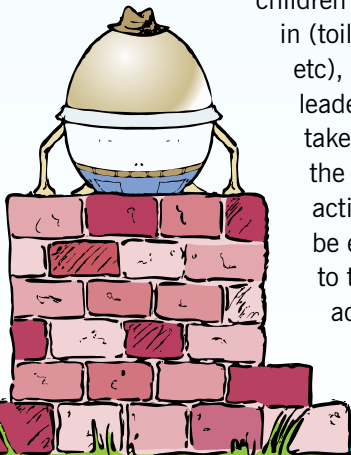
The Nursery Rhyme Trail is based around six activity stations. Each station links to a traditional nursery rhyme or two. At each site there are props to help guide the children as to the origin of each nursery rhyme. These are supported by fun activities.



Groups and Organisation

The six trail activities work on rotation, so we can accommodate a maximum of six groups of children, with no more than ten children per group. Please arrange this prior to arrival. Although we co-ordinate and supervise the day, the trail is self-led. Each group will need adult helpers and please designate a capable leader for each group.

At the very start of the day, while the children are settling in (toilet, snacks etc), the group leaders will be taken around the trail and the activities will be explained to them. In addition,



activity instruction cards are left at each station. Due to the fact that groups move around the trail on rotation, the importance of time-keeping will be emphasised to the group leaders. Approximately twenty minutes is spent on each activity. The trail is designed so that three activities are completed before lunch, then another three after. Activities 1-3 and 4-6 are within sight of each other so it makes it easier to co-ordinate with the other groups in your rotation.

Weather

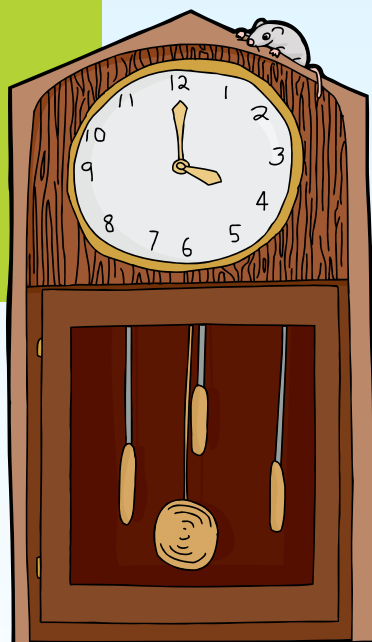
We are keen to promote learning outdoors, whatever the weather, therefore it is very important that your children bring wet weather clothing in case of rain. Make sure they are wrapped up warmly if it is cold and have sensible footwear such as wellington boots, walking boots or old trainers.



Nursery Rhymes

As the trail is based around set nursery rhymes, it improves the day considerably if the children are familiar with all of them prior to arrival. The nursery rhymes are:

- Little Miss Muffet
- Incy Wincy Spider
- The Grand Old Duke of York
- Little Bo Peep
- Mary Had a Little Lamb
- Jack and Jill
- Humpty Dumpty
- Ride a Cock Horse to Banbury Cross
- Hickory Dickory Dock



Food and Drink

Children are required to bring packed lunches. There is time at the start of the day for milk and snacks if you choose to bring them. We provide hot drinks for your staff.

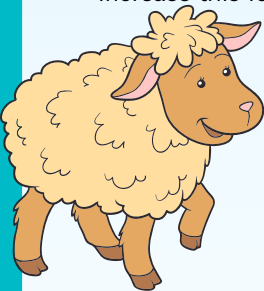


Lunch Time

This is supervised by your school staff. You will have access to an indoor base room in which to eat. Alternatively you can picnic outside. There is an adventure playground which can be visited, weather permitting.

Important points to consider before you visit:

- A preliminary visit for you to familiarise yourself with the activities and environment is a pre-requisite of booking.
- Please organise your children into groups before you arrive. There are 6 stations, so children need to be in 6 groups of not more than 10 children.
- The usual ratio of adults to children applies, but you may choose to increase this for the visit. One adult per group should be a qualified practitioner. An Outdoor Learning Co-ordinator will oversee all groups as they move around the activities.
- 3 stations will be completed before lunch and 3 afterwards. Please ensure that each station is left in good order and in the appropriate place for the next group.
- Try to bring a camera to record activities the children take part in and creations they make. This will be very valuable for extending and consolidating children's learning when you are back in your setting.
- Parents should be advised to send children in suitable clothing and appropriate footwear, as all activities are based outside all year round. Waterproof jackets and/or sunhats will be required. Wellington boots can be worn or brought in a bag.



per group should be a qualified practitioner. An Outdoor Learning Co-ordinator will oversee all groups as they move around the activities.

To arrange your preliminary visit, please ring the Bookings Officer on 01509 890119.

Preliminary visits are usually arranged for 4.15pm on specified dates at Beaumanor Hall. At least one leader must attend the preliminary visit. They will then be required to cascade the information to the other leaders on their return to school.

More information

For more information or to book a visit please call **01509 890119** or email **beaumanor.hall@leics.gov.uk**

Beaumanor Hall, Woodhouse, Leicestershire LE12 8TX

www.beaumanorhall.co.uk

 /beaumanor-hall

